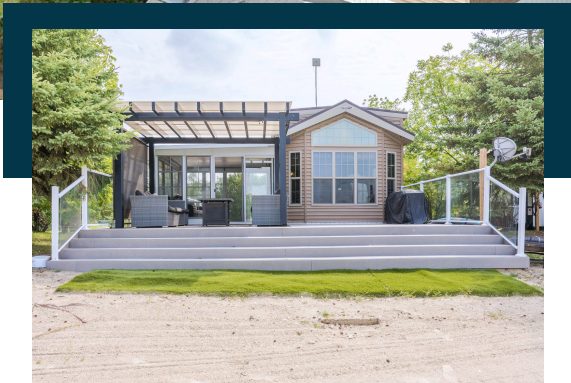




SEASONAL RV CAMPING
SITE 90

37116 Rd 37 N (Park Rd)
RM of Ste. Anne, MB, Canada



WATERFRONT PARK MODEL ON SUNSET VIEW Site 90

2013 WOODLAND PARK – PARK MODEL

50 amp Electrical Service

Primary Bedroom – King Bed

1 Full Bathroom

**Residential Appliances including Fridge,
Stove, Dishwasher and Wine Fridge**

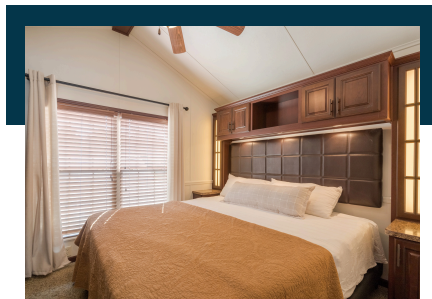
Air Conditioner & Furnace

Attached Sunscape 3 Season Sunroom

INCLUDES:

All Composite Decks & Stairs

Storage Shed & Sunset View Gazebo



\$149,900

BOOK AN APPOINTMENT TO VIEW



204-371-1159



info@cherryhillliving.ca



www.cherryhillliving.ca